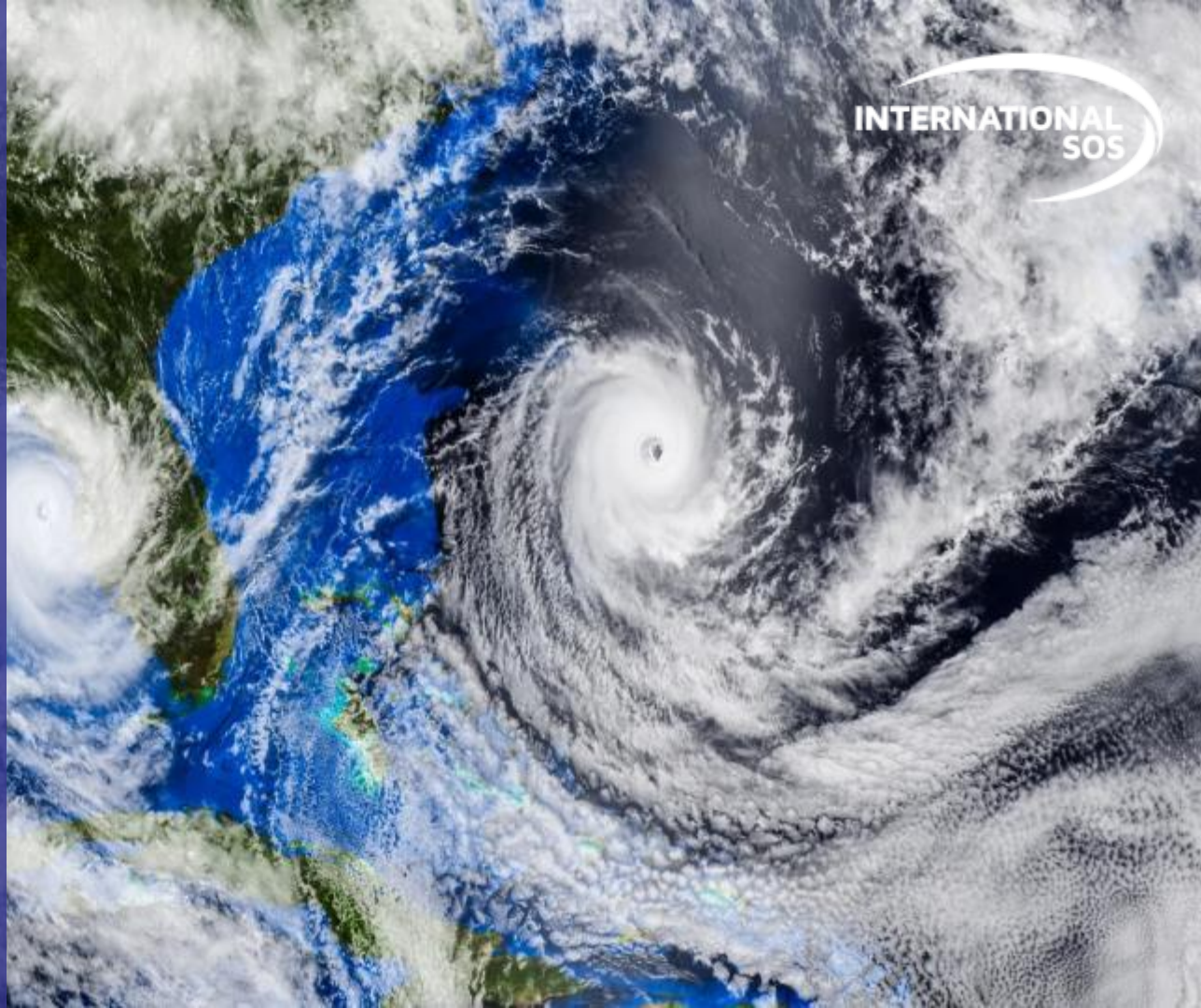


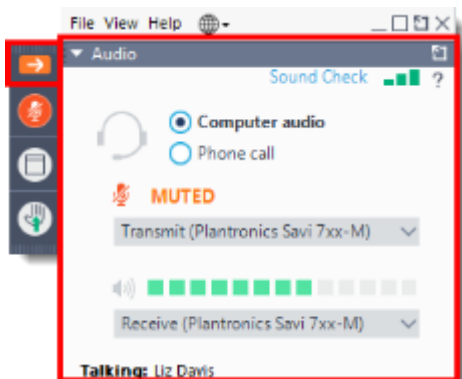
# PREPARING FOR HURRICANE SEASON 2020

---

May 28, 2020



# GOTOWEBINAR HOUSEKEEPING: ATTENDEE PARTICIPATION



## Your Participation

Open and close your control panel

Join audio:

- Choose **Mic & Speakers** to use VoIP
- Choose **Telephone** and dial using the information provided

Submit your questions using the **questions** panel, we will answer as time allows.

**Note:** Today's presentation is being recorded and will be provided via email.

# SPEAKERS



**ERIKA WEISBROD**

Director, Security Solutions,  
Americas  
International SOS



**JEREMY PROUT**

Regional Security Manager  
International SOS

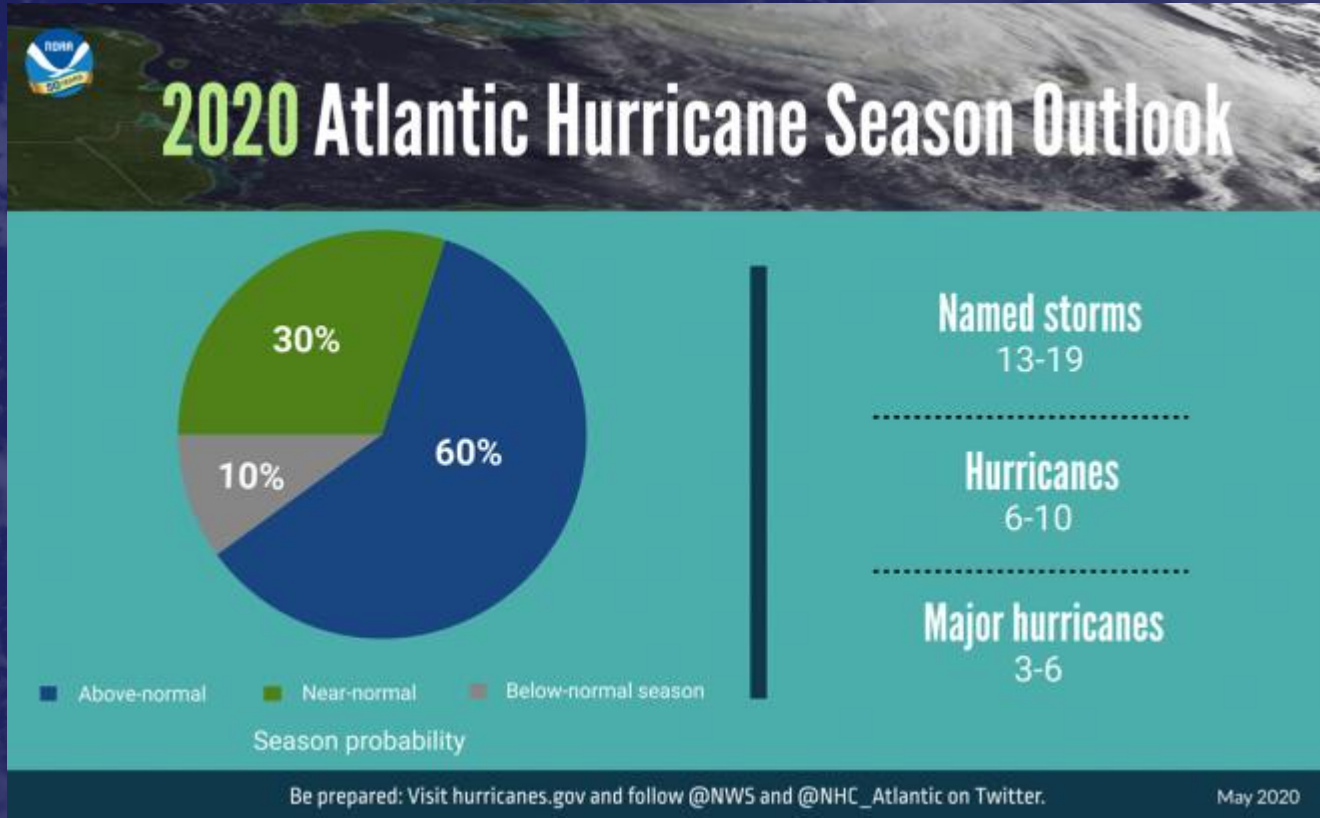
# AGENDA



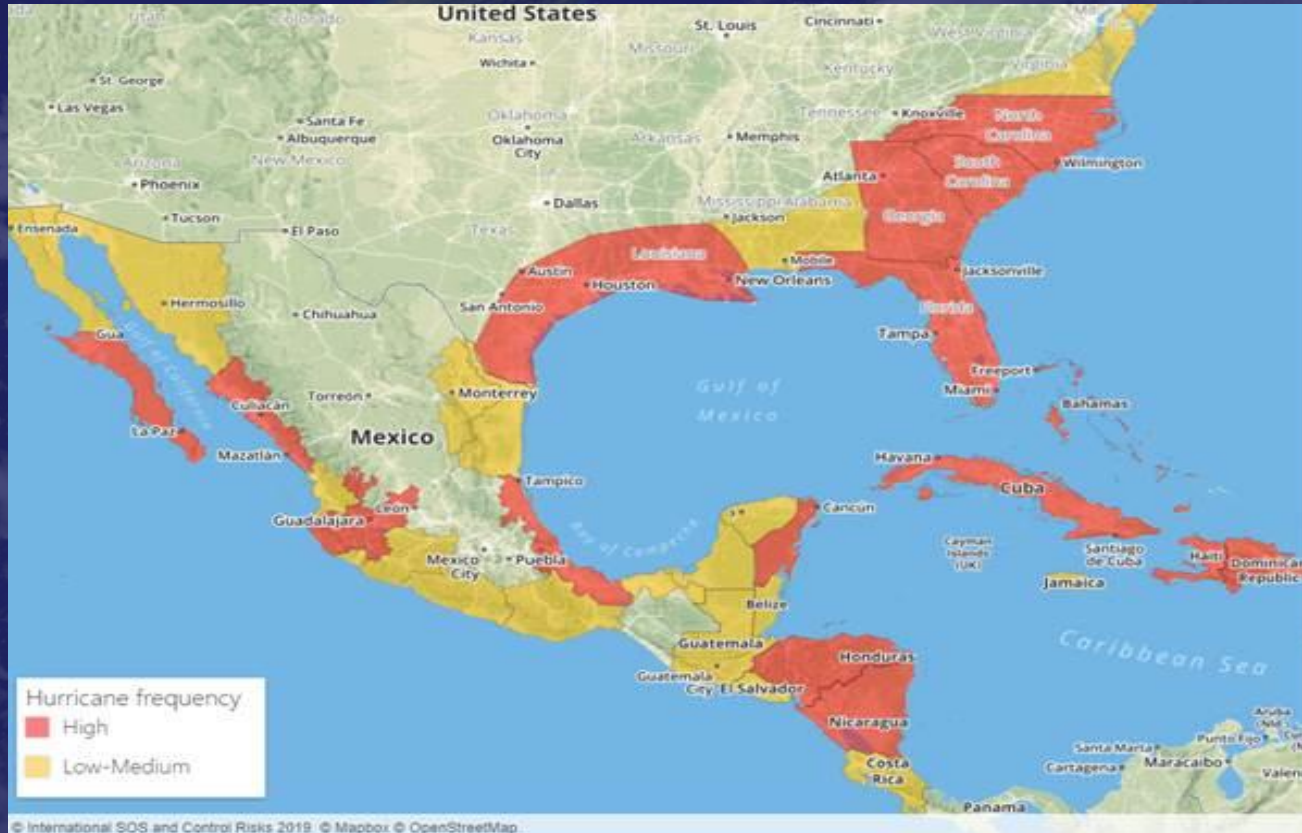
- 2020 Hurricane Season Forecast
- COVID-19 Considerations
- Recommendations for Planning and Preparation
- Support from International SOS



# 2020 HURRICANE FORECAST



# AT RISK ZONES





# TYPES OF DISRUPTION

- Flooding
- Blocked or damaged roads
- Flight cancelations or airport closures
- Telecommunications, electricity, water supply
- Supply chain





# COVID-19 CONSIDERATIONS FOR ORGANIZATIONS

- Overstretched local / national emergency services
- Access to shelters
- Need for stand-fast alternatives
- Already limited commercial flight options
- Financial constraints at all levels



# **COVID-19 CONSIDERATIONS FOR INDIVIDUALS**

- Difficult to move large numbers of individuals
- Supply chain
- Impact to business operations
- Deterioration of security environment
- Increased COVID-19 exposure if Second Wave



# REMOTE WORKFORCE IMPLICATIONS



## Pros

- Able to evacuate / re-locate sooner
- Easier business continuity transition
- Fewer recovery needs for brick & mortar

## Cons

- Accountability challenges
- Need to stock up on essential supplies
- Loss of power for individuals to hinder WFH



# WFH PREPARATION

- Adequate shelter
- Supplies
- Safety Equipment & First Aid
- Communication Equipment
- Accountability protocols
- Incident Reporting
- Evacuation Planning

# EVACUATION CHALLENGES

- Reduced shelter/accommodation options
- Impacted supply chain
- Interstate pandemic restrictions
- Public Health limitations
- Financial considerations
- State & Federal support



# PLANNING

## WHAT ORGANIZATIONS CAN DO

### BEST PRACTICES IN PLANNING

- ☒ Workforce assessment
- ☒ Vulnerability assessment
- ☒ Evacuation Thresholds
- ☒ Crisis Management Team Location
- ☒ Pandemic Response Posture
- ☒ Update Business Continuity



# PLANNING

## WHAT ORGANIZATIONS CAN DO

### BEST PRACTICES IN PLANNING



**Supply Chain**



**Vendor Engagement**



**Scenario-based plans & exercises**

- Pre: evacuation vs stand fast
- Response: locate and retrieve
- Recovery: Supplies, medical care, infrastructure, return



**Resources**

- Pre-scripted communications and modes
- Supply inventory – on ground and near

# PLANNING

## HOW ARE WE PREPARING FOR HURRICANE SEASON INTERNATIONAL SOS



Country planning trips to assess local capabilities and limitations.



Vetting and certification of providers to include logistics, maritime, aviation.



Training and procuring equipment for natural disaster-specific deployments.



Engagement and partnerships with local and federal governments.



# ALERTING



## INTERNATIONAL SOS

**Bahamas: Continue to defer inbound travel to Bahamas due to passage of Hurricane Dorian; travellers on Abaco Islands, Berry Islands, Bimini, Grand Bahama should stand fast**

### OVERVIEW

- ☒ **Level:** **Advisory**
- ☒ **Location:** Bahamas
- ☒ **Category:** Cyclone, Transport disruption, Flood

**Last Updated: 02 Sep 2019 22:06 (GMT)**

Members should continue to **defer inbound travel to Bahamas** due to Those on Abaco Islands, Berry Islands, Bimini, and Grand Bahama is least **3 September**. Dorian weakened slightly on 2 September, becoming highest of a five-tier scale). However, life-threatening winds and flood aforementioned islands until at least **3 September**. Catastrophic damage including widespread outages of electricity and communication services the US National Hurricane Center (NHC), is in effect for Grand Bahama



## INTERNATIONAL SOS

**India: West Bengal state: Continue to defer non-essential travel to areas severely affected by cyclone's passage**

### OVERVIEW

- 📌 **Level:** **Advisory**
- 📍 **Location:** **West Bengal - India**
- 🚧 **Category:** Cyclone, Infrastructure outage, Road disruption, Travel restriction

**Last Updated: 27 May 2020 18:08 (GMT)**

Members should defer all non-essential travel to areas of West Bengal state worst-hit by the passage of cyclone Amphan **until at least 29 May**. These are East Medinipur, North 24 Parganas and South 24 Parganas districts, where disruption from significant infrastructural damage is likely to persist amid ongoing relief and restoration works. No major residual disruption was reported in Odisha (Orissa) state. Domestic flights to and from Kolkata (West Bengal) will resume **on 28 May**. Travel can resume with caution in Hooghly, Howrah and Kolkata districts (all West Bengal), as well as in Odisha, after reconfirming the status of roads.

# ENTERPRISE HEALTH SECURITY CENTER

## Hurricane / Typhoon / Cyclone Playbooks

- Covering 7 storm scenarios
- Updated for COVID-19

## Flood Playbook

## Sample Hurricane Resources:

- Avoiding Illness
- Avoiding Injury
- Decision Making Priorities
- Disaster Preparedness Supplies & Equipment Checklist
- Emergency Grab Bag Poster
- Employee Evacuation Update
- Evac Port of Departure Briefing
- Evacuation Emergency Requirements
- Evacuation Factors to Increase Security Measures
- Evacuation Journey Management Guidelines
- Evacuation Managing an Incident
- Evacuation Notification Levels
- Evacuation Plan Quick Reference
- Evacuation Procedures Checklist
- Evacuation Release Form
- Evacuation Stakeholder Contact List
- Evacuation Stand Fast Plan
- Evacuee Assembly Area Briefing
- Evacuee Manifest Form



- Hurricane FAQ
- Food and Water Safety
- Internal Situational Update
- Missing Persons Protocol
- Hurricane Overview
- Hurricane Poster
- Wind speed vs Damage Table
- Tropical Cyclone Comparison Sheet



# RESPOND WHAT TO DO



## WORK THE PLAN – REMAIN FLEXIBLE

Plan the flight  
and fly the plan.  
However, be ready to  
adjust as needed.



## TIMELY RESPONSE

Time is a commodity.  
Decisions and internal  
processes must be  
accelerated.



## EXPECT CRISES WITHIN A CRISIS

A natural disaster  
crisis is an  
accumulation of  
smaller crises.



## COMMUNICATE

Communicate with  
business partners,  
media and relevant  
stakeholders, affected  
employees/  
dependants.

# KEY TAKEAWAYS



## HURRICANES REMAIN A PRIMARY HAZARD

COVID + Hurricanes = managing layered risk

## IT'S ALL ABOUT PREPARATION



## RESILIENCE IS ABOUT FLEXIBILITY

## INFORMATION IS CRITICAL, COMMUNICATION IS KEY



## INTERNATIONAL SOS IS YOUR PARTNER



# THANK YOU FOR ATTENDING

---

Webinar recording and  
materials will be emailed  
within the next few hours.

